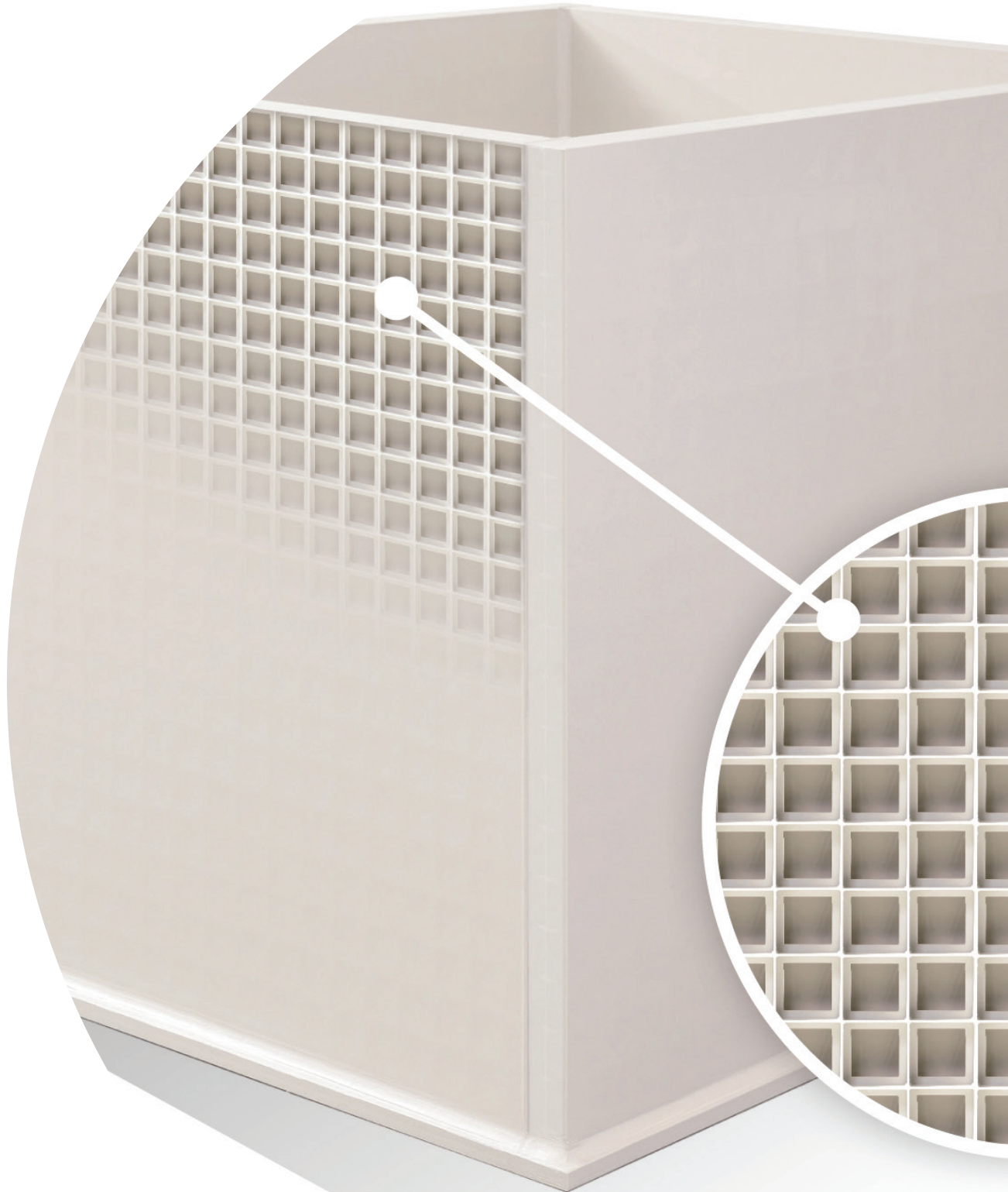


# **POLYSTONE® P CUBX®**

Fast, safe and efficient construction  
of rectangular tanks



# Polystone® P CubX®. True strength comes from within.

Polystone® P CubX® is a completely new tank construction sheet with an inner cube structure that allows for quicker and easier rectangular tank construction.

The sheet design combines very high longitudinal and transverse stiffness in the sheet itself. CubX® consists internally of a homogenous, rectangular (orthogonal) grid pattern, welded to two sheets on its outsides, forming the sheet surface. The result is an innovative construction sheet that combines light weight and ease of handling with very high longitudinal and transverse rigidity.

Available in two options:

**Classic Polystone® P CubX®** made from Polystone P (PP) and the UV resistant version for outdoor use, **Polystone® P CubX® UV**.

## Characteristics

- High longitudinal and transversal stiffness
- High chemical resistance
- Light weight, easy to handle
- Good thermal insulation
- Easy to weld by means of heating element butt welding, hot gas welding and extrusion welding

## Typical applications

- Rectangular tanks in galvanising plants, steel pickling plants, sewage technology, cleaning systems, purification systems, tank fittings
- Lids and partitions for round tanks
- Enclosures for ventilation systems
- Retrofitting and repair of rectangular tanks
- Non chemical related areas such as flood retention, fishery breeding tanks and swimming pools

## Product specifications

**Material:** Polystone® P (PP)

**Size:** 2,000mm x 1,500mm

**Thickness:** 57mm

**Colour:** Polystone® P CubX® - Grey

Polystone® P CubX® UV - White



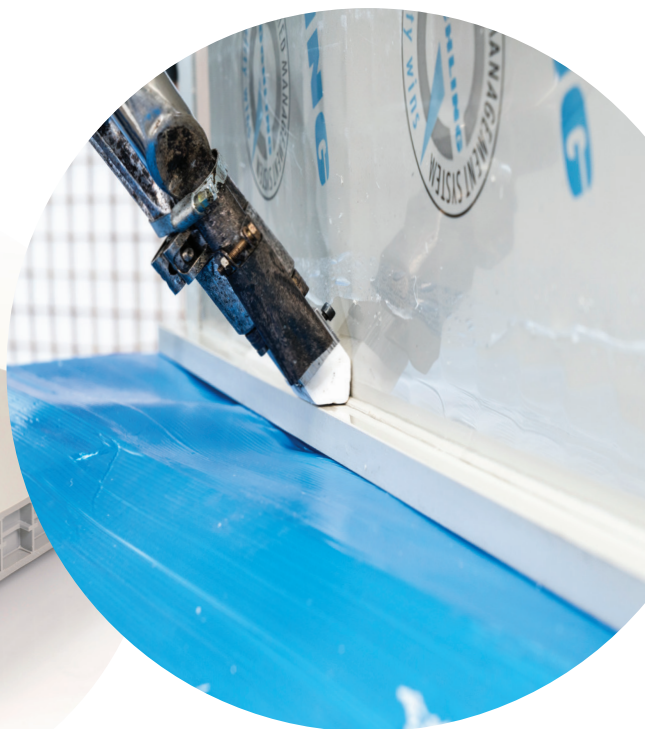
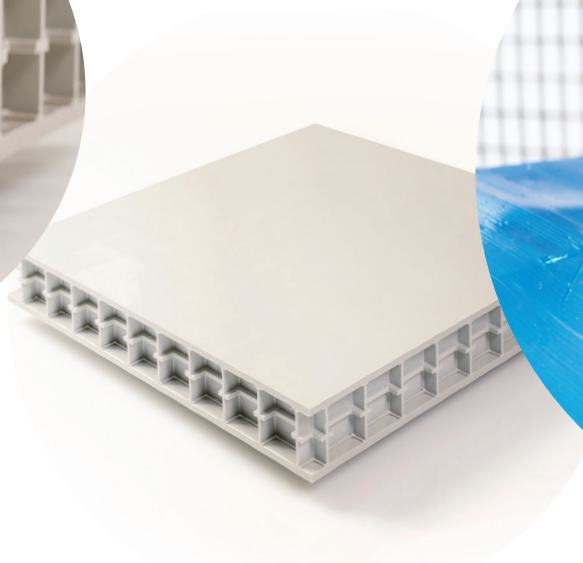
## Specially developed for chemical tank and plant construction

**Reduction of steel reinforcements** - depending on the tank size, rectangular tanks made of Polystone® P CubX® require less or even no plastic coated steel reinforcements due to the high rigidity of the sheet. This significantly reduces the number of necessary welds and saves time and resources.

**Easy handling** - Tests conducted in Röchling's in-house material laboratory show: A Polystone® P CubX® sheet with a thickness of 57mm has the same stiffness as a solid plastic sheet made of PP with a thickness of 35mm, but weighs only half as much. This simplifies the handling of the sheets.

**High level of process safety** - Polystone® P CubX® increases the process reliability of your rectangular tank when compared to solid plastic sheets. If leakage occurs, the leaking fluid accumulates locally and is limited in the interior of the sheet. The operator has more time to take appropriate measures. For leakage monitoring, CubX® sheets are equipped with a recess as standard, which forms a cavity in the finished tank for easy monitoring.

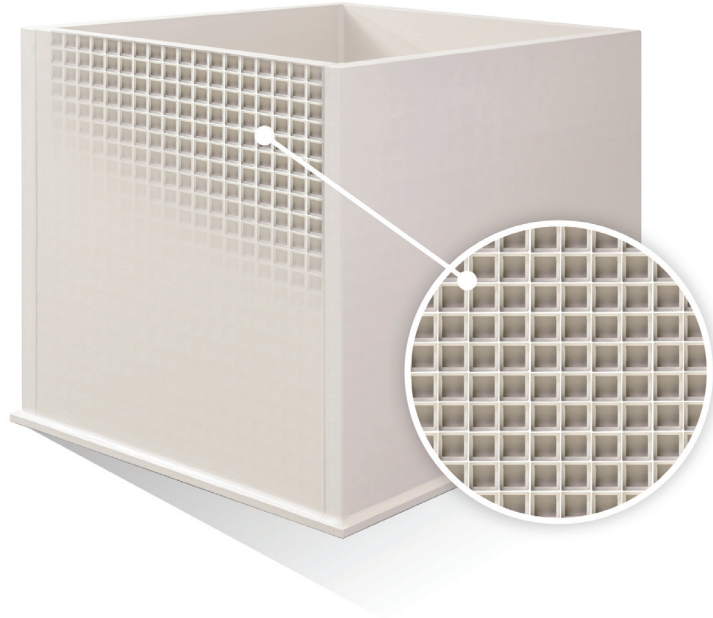
**Thermal insulation** - Polystone® P CubX® offers good thermal insulation thanks to the air trapped in the hollow chambers. Elaborate and costly insulation work can be reduced or saved.



## About the manufacturer - Röchling Engineering Plastics

Röchling Engineering Plastics is a world-wide leader in the development and production of semi finished engineering plastic products. Röchling has an excellent reputation, highly qualified staff, superior material development, state of the art production facilities, laboratories and certified quality management systems to provide quality products and economic efficiencies.

# POLYSTONE® P CUBX®



Sydney | Melbourne | Brisbane | Adelaide | Perth  
1800 170 001  
[www.dotmar.com.au](http://www.dotmar.com.au)

Auckland | Palmerston North | Christchurch  
0800 650 750  
[www.dotmar.co.nz](http://www.dotmar.co.nz)